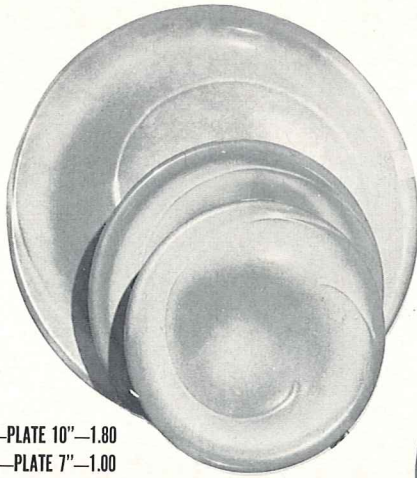


\*4K—BUTTER DISH—2.00



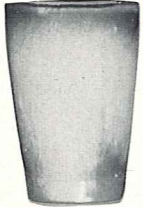
4F—PLATE 10"—1.80  
4G—PLATE 7"—1.00  
4E—5" SAUCER—.75



\*4S—BONE DISH 6 1/2"—1.00



4X—CEREAL 16 OZ.—1.00



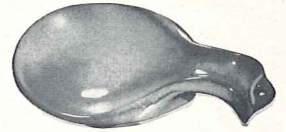
\*5L—12 OZ. TUMBLER—.90



\*5LC—6 OZ. JUICE—.75



4C—CUP—.90



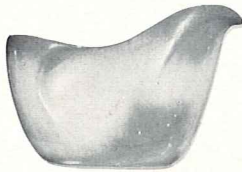
\*4Y—6" SPOON HOLDER—1.00



\*4H—SALT & PEPPER—1.50



\*4V—BAKER 2 QT.—3.00



4A—8 OZ. CREAMER—1.00



4B—SUGAR WITH LID—1.50



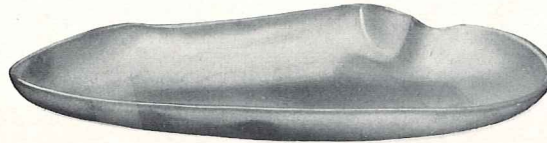
\*4M—MUG 18 OZ.—1.50



4Z—6" SOUP—1.00



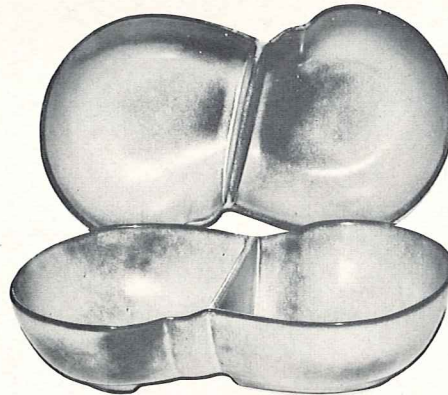
\*4N—VEGETABLE 24 OZ.—1.50



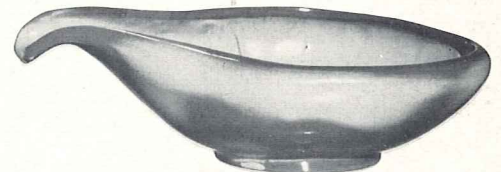
\*4P—13" PLATTER—2.50



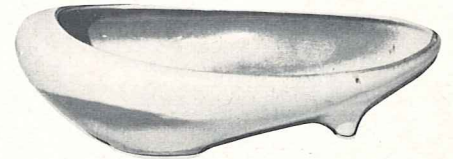
\*4W—BAKER 3 QT.—4.00



\*4QD—11" DIVIDED BOWL—2.50



\*214—SERVICE BOWL 12"—2.50



\*231—SERVICE BOWL 11"—2.50



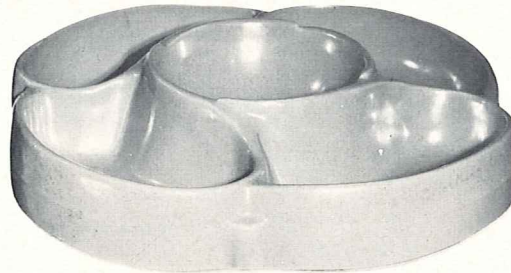
4SC—11 oz. SOUP CUP—1.50



\*BP—6 OZ. BEAN POT—.75



\*4XL—24 OZ. SALAD OR GUMBO—1.25



\*818—5 SECTION LAZY SUZETTE ON BALL BEARING BASE—12"—7.00



\*4D—PITCHER 2 QUART—3.00

THIS PAGE AVAILABLE IN PRAIRIE GREEN, DESERT GOLD AND BROWN SATIN, EXCEPT WHERE NOTED\*

\*AVAILABLE IN ALL COLORS—ADD 50% FOR FLAME—SEE BACK COVER

SIZES ARE APPROXIMATE AND MAY VARY SLIGHTLY.